

TITLE: DATA SCIENCE AND DATA MINING

DESCRIPTION OF THE TECHNOLOGIC CAPACITY

This technological capacity consists in the development and application of analytical models, putting special interest in predictive models, both categorical and numerical. This capacity has been developed within the Research Group of Knowledge Engineering and Data Analysis, constituted by researchers from the University Institute "Center for Operational Research" of the Miguel Hernández University of Elche.

MARKET APPLICATION SECTORS

The services offered from this group to apply this technological capacity are multi-sectoral. It can carry out technological transfer to different productive sectors: industry (footwear), marketing (portals e-commerce), public administration (autonomous, provincial and local), health (autonomous public administration), tourism (administration and private companies), etc.

TECHNICAL ADVANTAGES AND BUSINESS BENEFITS

The main advantage of the predictive models developed is that they end up being the basis of the corresponding decision support systems of the entities that require them. The predictive models developed start by revealing the most important variables in each context, from which to model or predict the desired objectives in each case (for example: diagnosis, reserve status, purchase volume, breakage moment of stock, etc.)

CURRENT STATE OF DEVELOPMENT

Currently, the group has developed a web analytical tool Big Data, which uses to perform the analysis type required. This tool incorporates algorithms developed during the research carried out by the members of this Group. Projects have already been carried out and services have been provided to companies and entities in the sectors mentioned above. Therefore, the technological capacity of this Group is sufficiently validated and subjected to processes of continuous improvement, in order to adapt it to the requirements of the companies and entities that demand it.

TITLE: DATA SCIENCE AND DATA MINING

COLLABORATION SOUGHT

We look for collaborators working in projects where the volume of the data handled makes necessary the application of analytical techniques of Big Data.

Services offered to all companies and entities that require this technology.

RELATED IMAGES

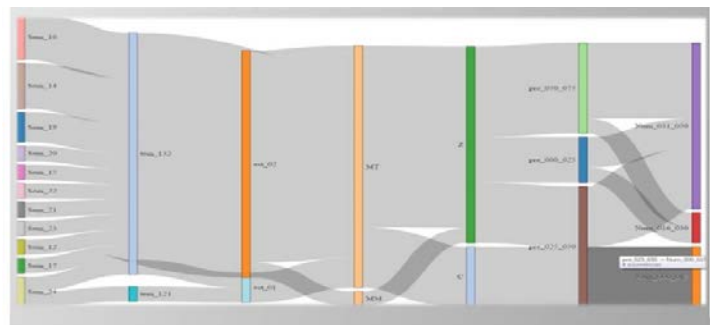
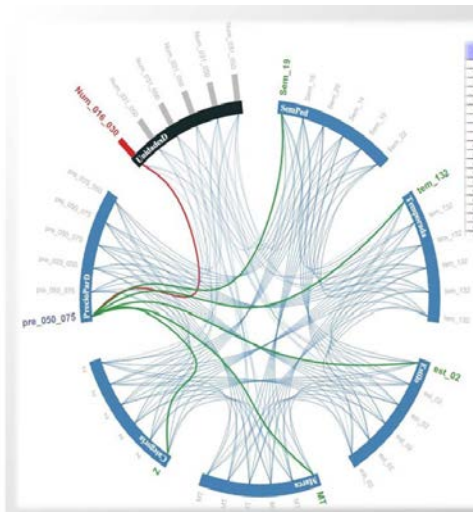


Image 1: Graphic own software

Image 2: Graphic own software

CONTACT

Mariano Almela Alarcón

M.almela@umh.es

Servicio Gestión de la Investigación - OTRI
UNIVERSIDAD MIGUEL HERNANDEZ DE ELCHE
Avda. de la Universidad s/n
Edif. Rectorado y Consejo Social
03202 Elche, Alicante
Telf.: 966658733